



CorVu 5

Driving Breakthrough Performance

2005. 05. 21

mksong@kci.co.kr



1. CorVu 社
2. CorVu5 Overview
3. CorStrategy
4. CorBusiness
5. Demo
6. Questions & Answers

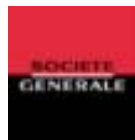


Global CPM(Corporate Performance Management) Solution Provider

- Founded in 1990
- International Locations (HQ: Minneapolis)
- Publicly-traded in the US (NASDAQ)
- 4,500+ Customers, worldwide
- 1st vendor automated the Balanced Scorecard
- World's largest Scorecard Implementation – US Army
- Global Research & Development in Australia



CorVu Customers (4500+ Globally)



CorVu Customers (4500+ Globally)



1. CorVu 社
2. CorVu5 Overview
3. CorStrategy
4. CorBusiness
5. Demo
6. Questions & Answers



The Problem our customers had was...



It's Disconnected

‘ ‘ ‘
,

‘ ’

‘ ’

‘ ’



Strategy

Disconnect

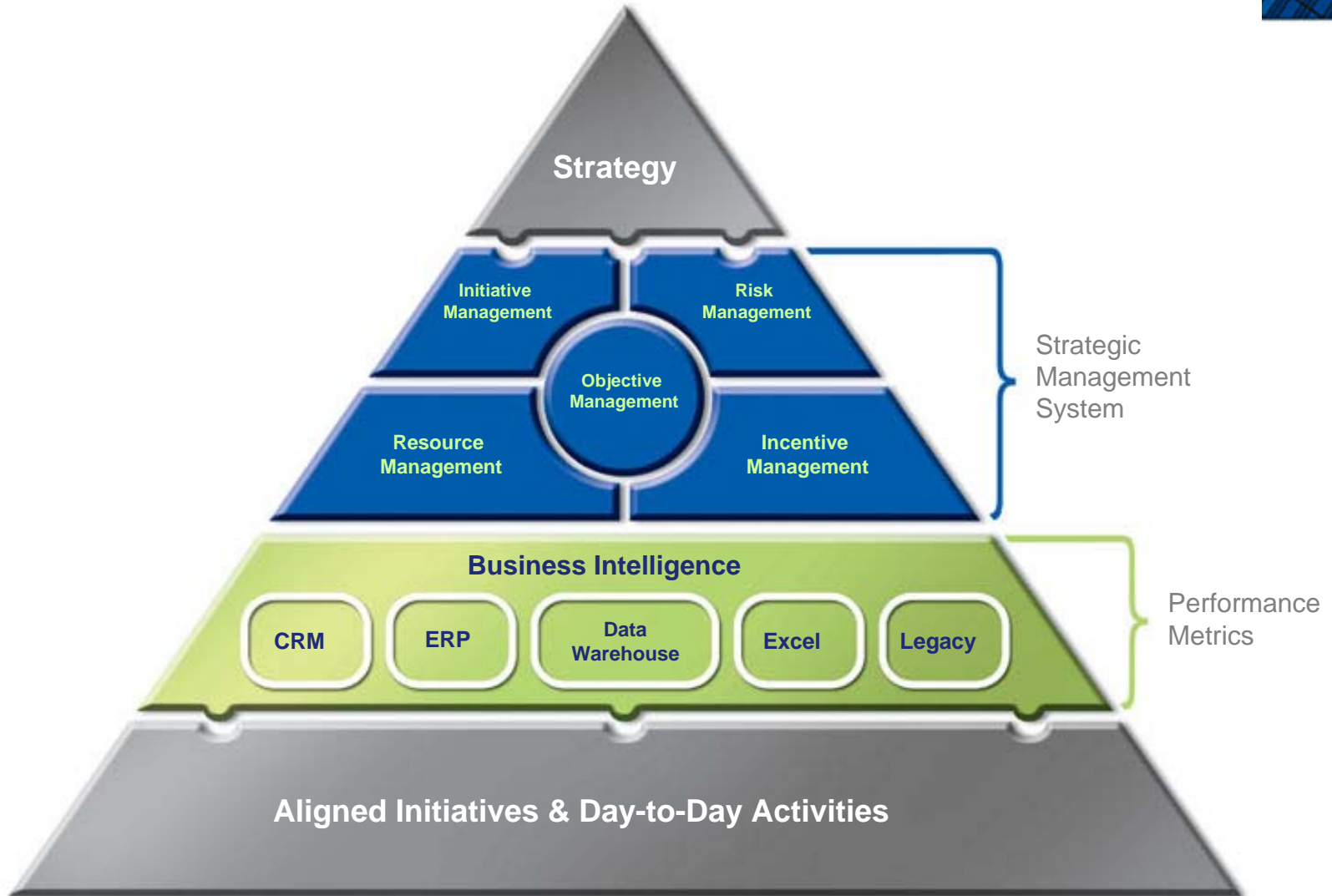


Performance Metrics

Day-to-Day Activities

“ (manage) (improve) ”

CorVu Breakthrough Enabling Technology



CorVu 5 Five Key Modules



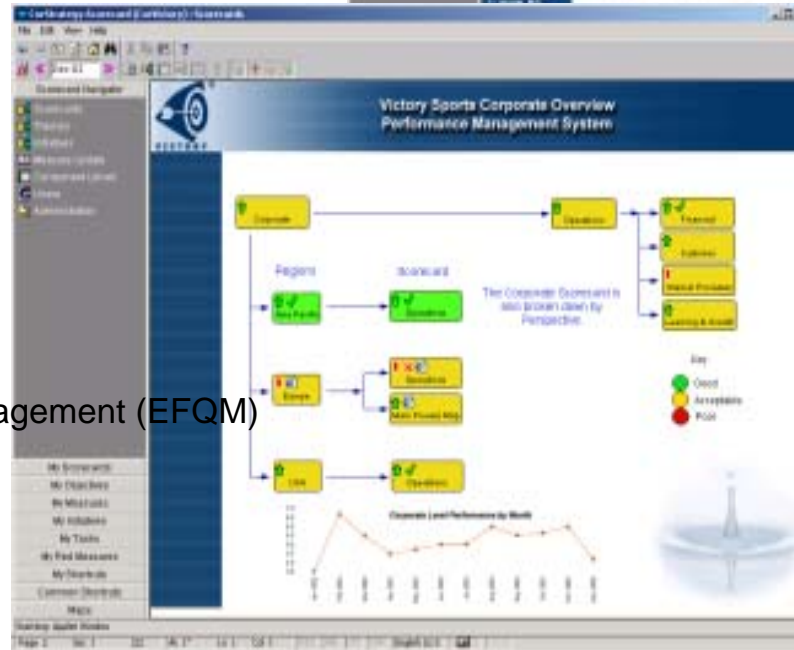
1. CorVu 社
2. CorVu5 Overview
3. CorStrategy
4. CorBusiness
5. Demo
6. Questions & Answers



- BSC 100% (, Theme)
- user interface
- / / 가
- Role-Based Security (U.S. Army)

- () 가 Flexibility

- Balanced Scorecard (BSC)
- Six Sigma
- Total Quality Management (TQM)
- Economic Value Add (EVA)
- European Foundation of Quality Management (EFQM)
- Basel II
- ISO 9000
- Malcolm Baldrige Award for Quality



CorStrategy Newsfeed (BuildingPrideInitialDev) : Newsfeed

File Edit View Help

Mar 04

Map

Home Page Help

Currently viewing data for: March 2004


Welcome to PRiDe Performance Review Improvement & Delivery

OXFORD CITY COUNCIL

Building Pride in our City

Improve the council's performance

Working with others to deliver shared goals



Business Units

- Agit & Risk
- Bus Environment
- Business Systems
- Chief Executive
- City Works
- Customer Services
- Environmental Health
- Facilities Management
- Finance & Accounting
- Learning Services

My Scorecards

- My Objectives
- My Measures
- My Initiatives
- My Tasks
- My Red Measures
- My Shortcuts
- Custom Shortcuts

Map

Navigation: Apple Window

Start

http://w3.oxf... Back: Blair / P... CorStrategy: Soc... CorStrategy: Soc... Microsoft Powe...

CorStrategy Newsfeed (BuildingPrideInitialDev) : Newsfeed

File Edit View Help

Mar 04


Map

Best Value Start Page

Back to homepage

Double click anywhere on this page to read Oxford City Council's Best Value Performance Plan for 2004/05 ...

... or choose one of the tabs on the right to view actual data



Corporate Health

Housing & Benefits

Environment Services

Citizens & Special Services

Community Services

Best Value Performance Plan 2004/2005

Navigation: Apple Window

Start

http://w3.oxf... Blair / P... CorStrategy: Soc... CorStrategy: Soc... Microsoft Powe...

CorStrategy Scorecard (Public Sector) - Scorecards

Public Sector Demo CORVU 2003

Director

Improvement Themes

AIMS

1	2	3	4	5	6	7
---	---	---	---	---	---	---

Create a safer Area to Live, Work, Study and do Business

EDUCATION

Target 6 - Educational Expenditure

Target 7 - Educational Expenditure

Scoring Trend (past 6 months)

Strategic Vision

Letting Go (Red) → Letting Go (Yellow) → Moving Target (Green)

CorStrategy Scorecard (Buckingham Palace) - Scorecards

Welcome to PRiDe Performance Review Improvement & Delivery

BVPs by Quartile Position

This summary shows the quartile positions for the most recent results for each BVP.

Best (20) (20.00%)
Good (22) (22.00%)
Worst (22) (22.00%)
Not in Data (36)

Click here to view data for BVPs that total all 77 core BVPs published

CorStrategy Scorecard (Buckingham Palace) - Scorecards

Welcome to PRiDe Performance Review Improvement & Delivery

Latest projected quartile positions for BVPs targeted to move out of lowest quartile by Mar 2005

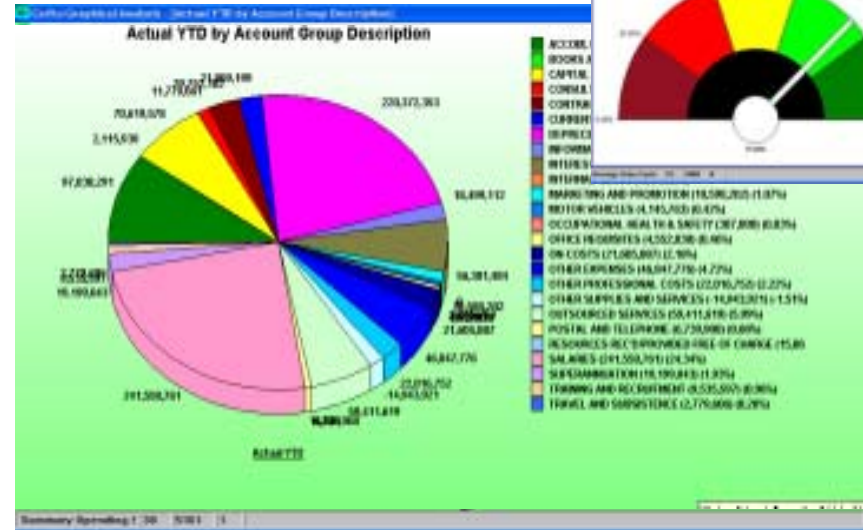
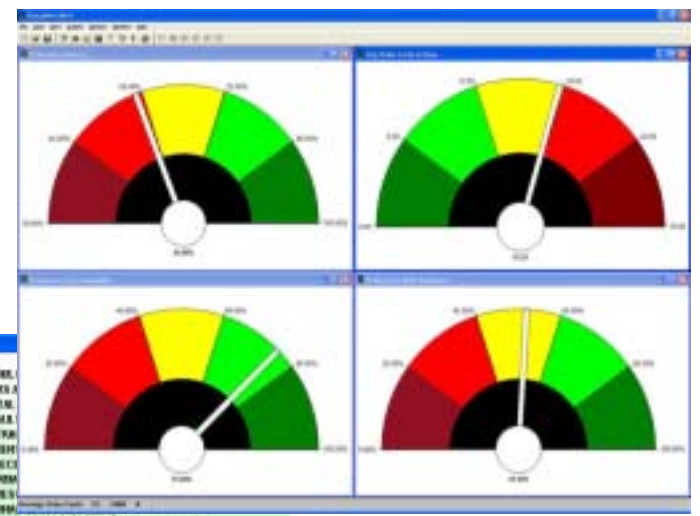
BVP	Current Position	Target Position	Target Date
D-000 % unpaid council money paid within 30 days	Worst	Good	30-Nov-2004
D-000 collection rates for Council Tax	Worst	Good	30-Nov-2004
D-000a Local Authority anti collection and service: Proportion of rent collected	Best	Best	30-Sep-2004
D-020 % council housing benefits satisfied with the overall service provided by their landlord	Worst	Good	31-Mar-2005
D-020a average time for processing applications of change of circumstances	Good	Good	30-Mar-2004
D-020b average time for processing applications of change of circumstances	Worst	Worst	30-Nov-2004
D-020c % acceptable applications recovered in the past	Worst	Good	30-Nov-2004
D-000a % customers satisfied with contact/access facilities at benefit office	Worst	Good	31-Mar-2004
D-000a % customers satisfied with telephone service	Worst	Good	31-Mar-2004
D-000a % customers satisfied with cleanliness standards	Worst	Good	31-Mar-2004
D-010a % proportion of local authority homes which were not closed at April 2003	Worst	Good	31-Mar-2005

Letting Go (Red) → Letting Go (Yellow) → Moving Target (Green)

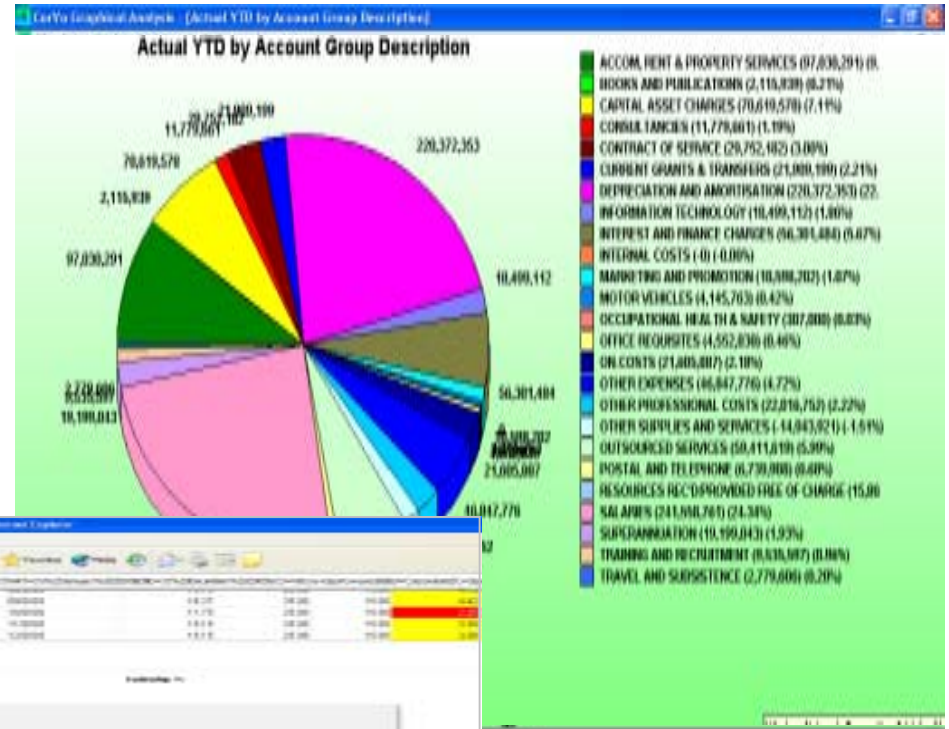
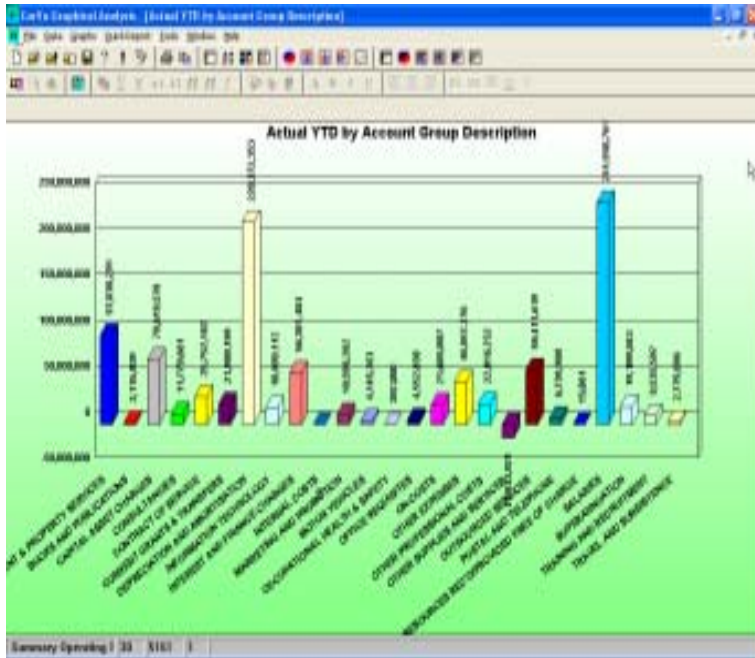
1. CorVu 社
2. CorVu5 Overview
3. CorStrategy
4. CorBusiness
5. Demo
6. Questions & Answers



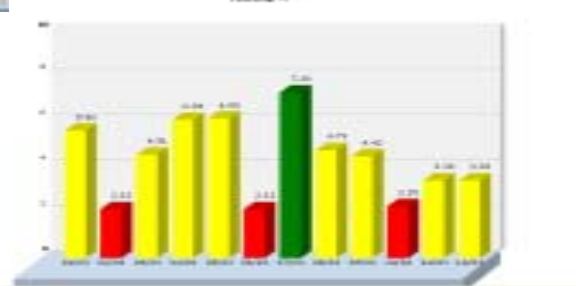
- architecture
- (KPIs)
- Conditional color-coded, informative visual report
- Query OLAP
- trend historical data
- 가
- HTML publish



Graphical Analysis



Category	Value 1	Value 2	Value 3
CONTRACTS	220,372,353	220,372,353	220,372,353
DEPRECIATION AND AMORTISATION	110,779,001	110,779,001	110,779,001
SALARIES	101,191,013	101,191,013	101,191,013
OTHER SUPPLIES AND SERVICES	97,030,291	97,030,291	97,030,291
PROPERTY SERVICES	82,220,699	82,220,699	82,220,699
RESEARCH AND DEVELOPMENT	70,619,578	70,619,578	70,619,578
TRAVEL AND SUBSISTENCE	21,116,838	21,116,838	21,116,838
OTHER EXPENSES	11,779,001	11,779,001	11,779,001
OTHER PROFESSIONAL COSTS	10,499,112	10,499,112	10,499,112
MARKETING AND PROMOTION	10,499,112	10,499,112	10,499,112
INFORMATION TECHNOLOGY	10,499,112	10,499,112	10,499,112
POSTAL AND TELEPHONE	8,730,808	8,730,808	8,730,808
RESOURCES RECOMMENDED FREE OF CHARGE	56,301,484	56,301,484	56,301,484
TRAINING AND RECRUITMENT	8,636,987	8,636,987	8,636,987
TRAVEL AND SUBSISTENCE	2,779,666	2,779,666	2,779,666



Query & Reporting

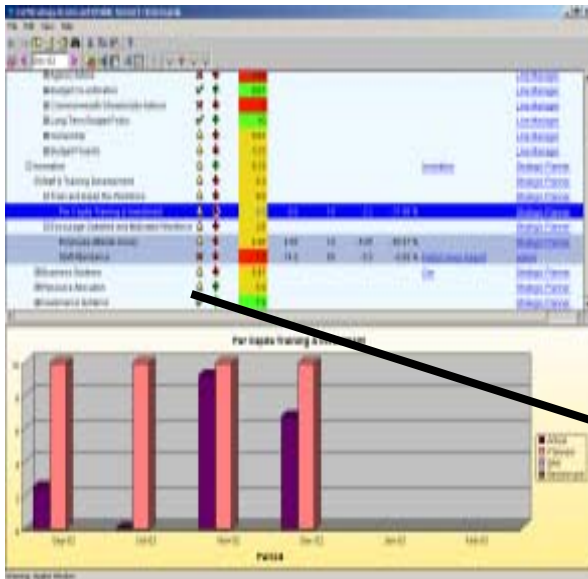
- "Quick Report" Wizard
- Color-coding, Imbedded Graphs, Bitmaps
- UI, Drill-down
- Interactive 'Expand-to-Detail' and 'Collapse-to-Summary'
- Report from a Database or Intuitive Datamarts

The screenshot displays the CorBusiness software interface with several components:

- Financial Summary Table:** A table with columns for 'Account Category', 'Description', '2002 Actual', '2002 Budget', and 'Variance'. It lists various expense categories such as '20000 SALARY', '20000 TRAVEL', '40000 INTERNAL CHARGES & RECOVERIES', and '90000 EDUCATION'.
- Data Table:** A table with columns 'Code', 'Description', and 'Notes'. It lists items like '20100 Office Supplies', '20101 Office Paper', '20102 Office Stationery', etc.
- Order Details Panel:** A panel on the right showing 'Order Details' for 'CORVU' with fields for 'Product Description', 'Sales Dollars', 'Units Sold', 'Gross Profit', and 'City Delivered'. It includes a table with data for 'Fast Mail Service' and 'Bookings Mail'.
- Sales Dollars by Product Description:** A pie chart showing the distribution of sales across different product descriptions.

Executive Alerts

- Graphically Monitor KPIs
- Quick overview of the Corporate Health
- Interactively drill down to view specific sub-groups
- Interactively drill down for further analysis of a KPI
- Rich imbedded commentary, workflow, collaboration



Commentary & Collaboration

Commentary Title: [Blank]

Created: 08 June 2010 10:00

Subject: [Blank]

Importance: [Blank]

What is going on: [Blank]

Period: [Blank]

Send Owner: [Blank]

Send Commentators: [Blank]

Cancel

	Beverages	Confectionery	Confectionery	Dairy Products	Meat/Seafood
Asahi Green		0.00%			
Blue Bird	5.25%				0.11%
Goodies Italy's		0.00%	0.70%	0.11%	
Kikkuri Oy		0.11%		0.11%	
Lake Trading			0.04%		0.00%
New England Sealed		0.00%	0.00%		0.00%

Interactive Drill Down

Specialist, not a generalist



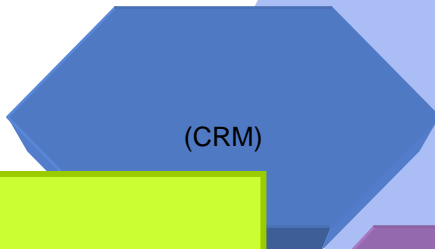
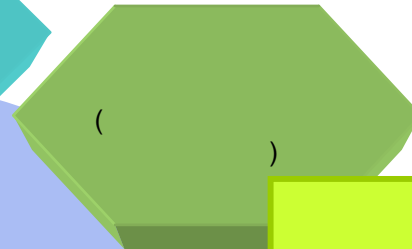
CorVu 5

Driving Breakthrough Performance

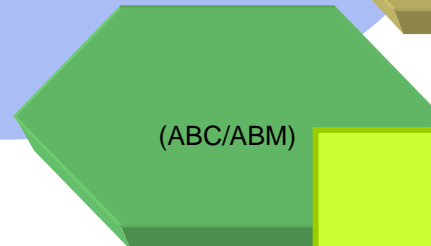
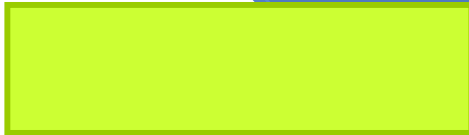
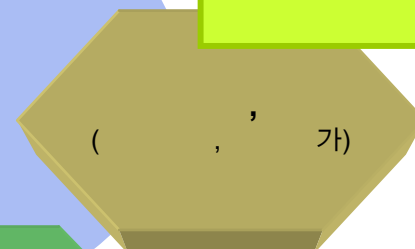
• BSC

가

가



BSC



1. CorVu 社
2. CorVu5 Overview
3. CorStrategy
4. CorBusiness
5. Demo
6. Questions & Answers





395-65 8

: (02) 829-3332 : (02) 829-3300

www.kcins.co.kr

